

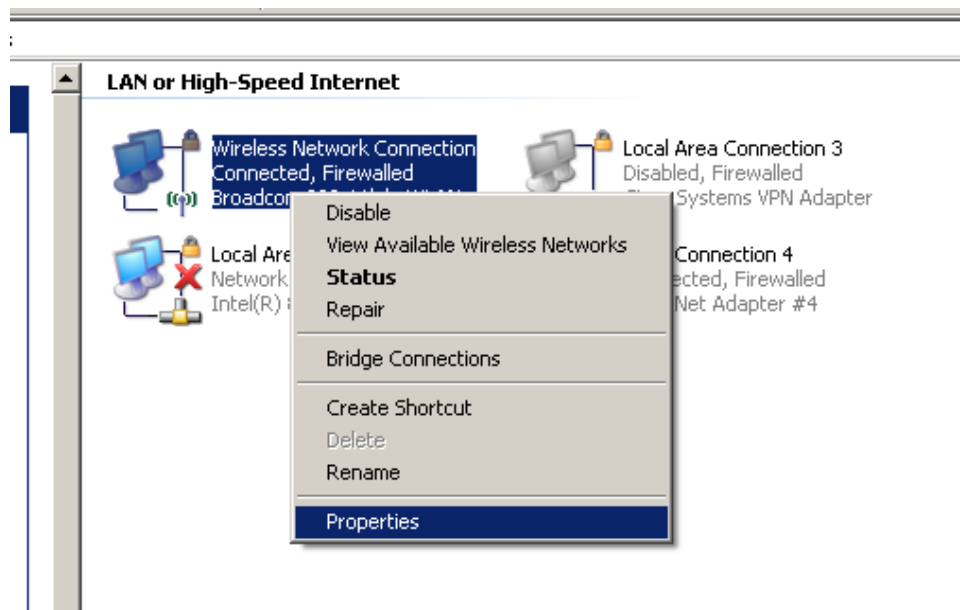
IP-Configuration **Wireless LAN**

(By Thomas Vollmann, Congress Graz)

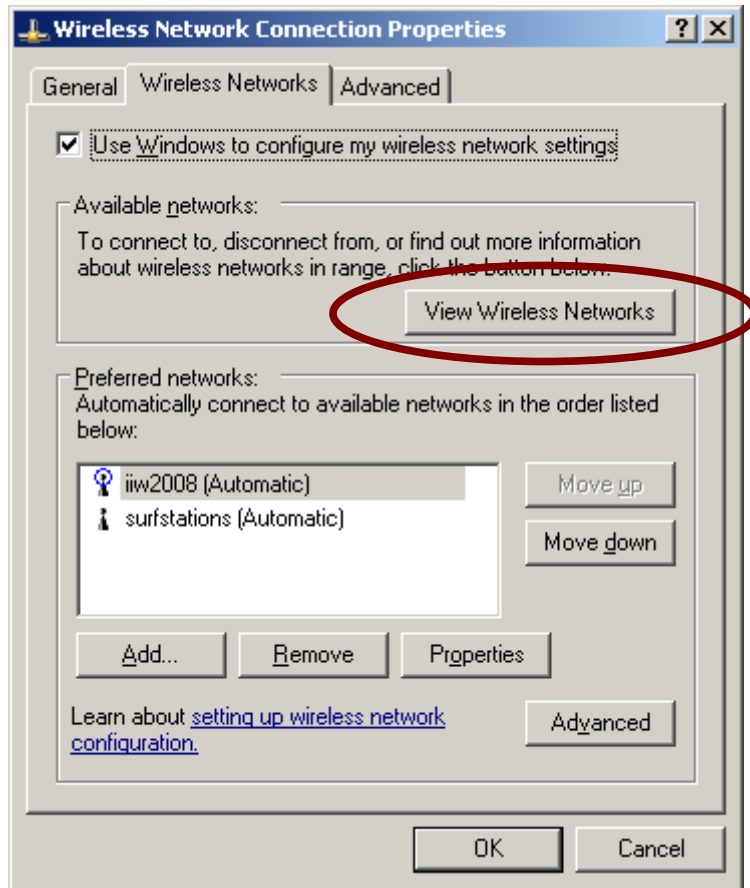
The configuration with internet access ist done automatically via DHCP (Obtain an IP- address an DNS automatically).

How to set up your internet access:

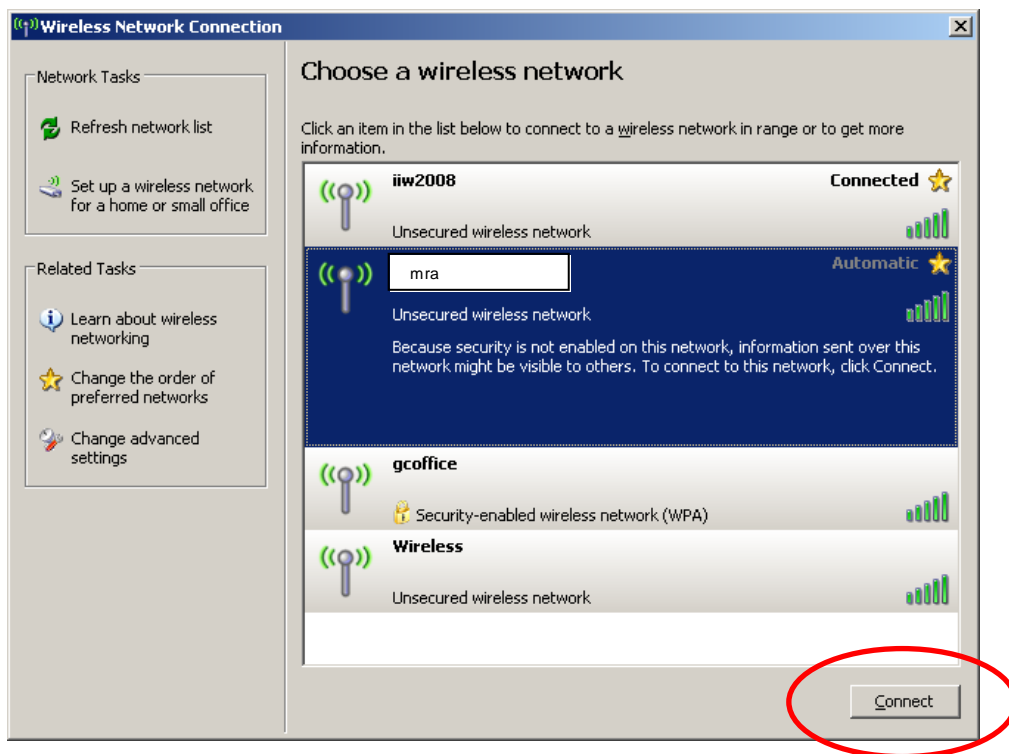
1. Make sure your WLAN- adaptor is activated.
2. Click with the right mouse button on the symbol „*My Network Places*“. The symbol is located either on the desktop or in the start menu. Choose the command „*Properties*“.
3. Click with the right mouse button on the symbol „*Wireless Network Connection*“ and then again „*Properties*“.



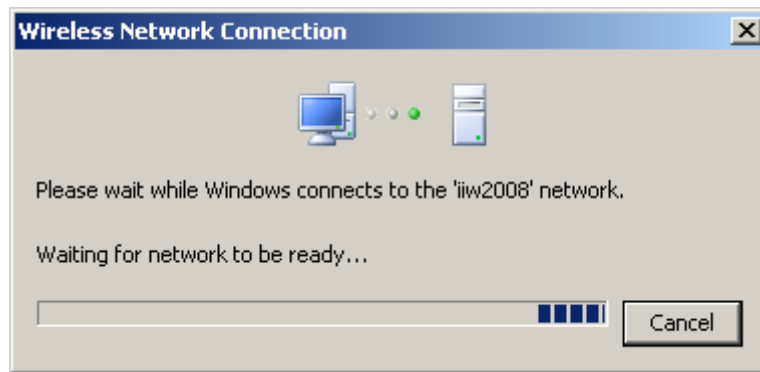
4. Choose the tab „Wireless Networks“ and then the pushbutton „View Wireless Networks“.



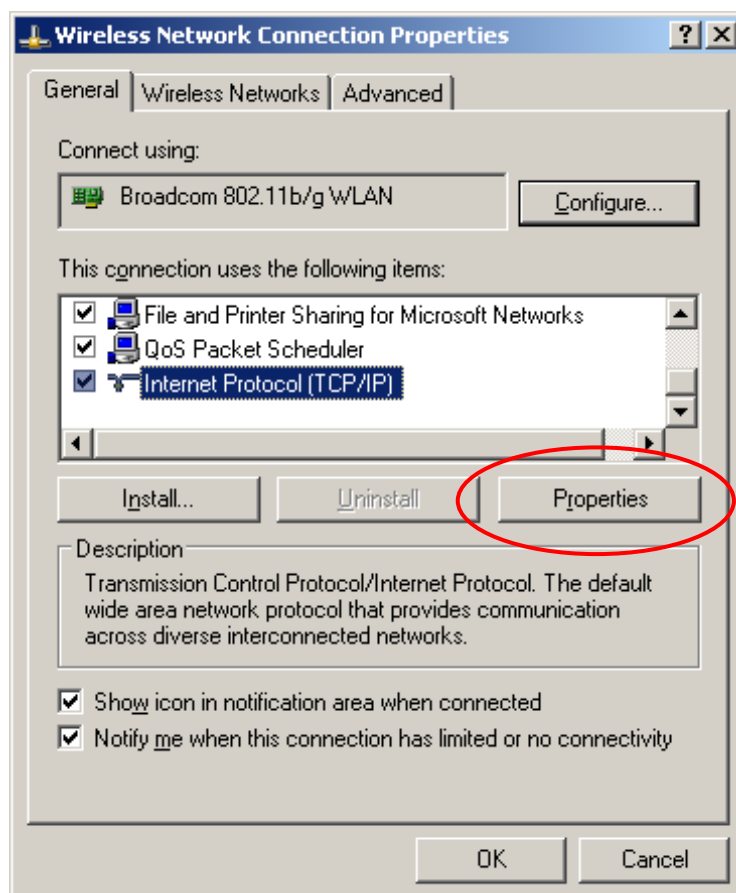
5. Choose from the list of available networks the one called „mra“ and then click „Connect“.



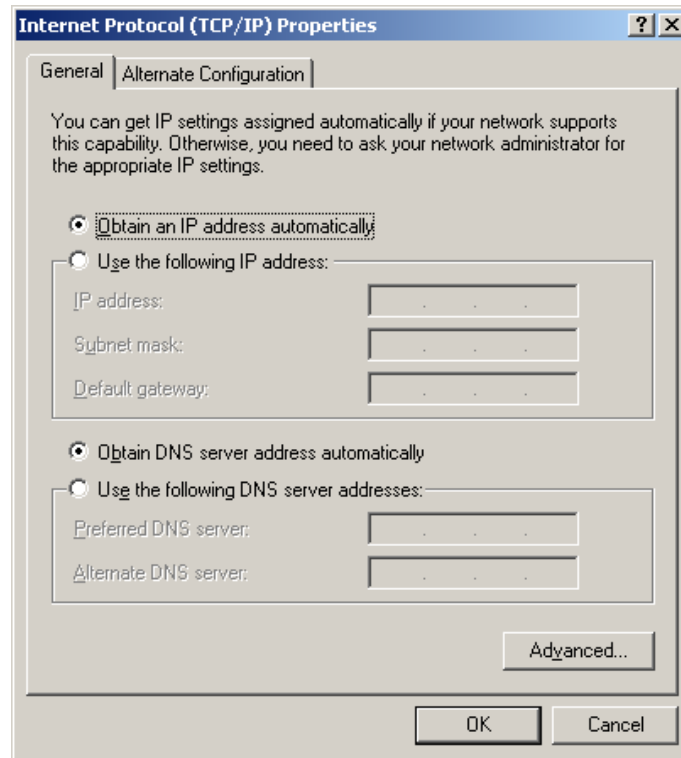
Wait until the connection has been established:



6. After the connection had been established, please recall the properties of „Wireless Network Connection“. See step 2 and 3.
7. Choose from the list „Internet Protocol (TCP/IP)“ and click the pushbutton „Properties“.



8. Choose „Obtain an IP- address automatically“ and „Obtain DNS- server automatically“.



9. Click OK- ready!

10. When you open your browser (e.g. internet explorer) your username and password will be checked.

username: mra@grazercongress.local

password: will be printed in the hardcopy of the programme

If you have further questions please do not hesitate to ask the technical staff!